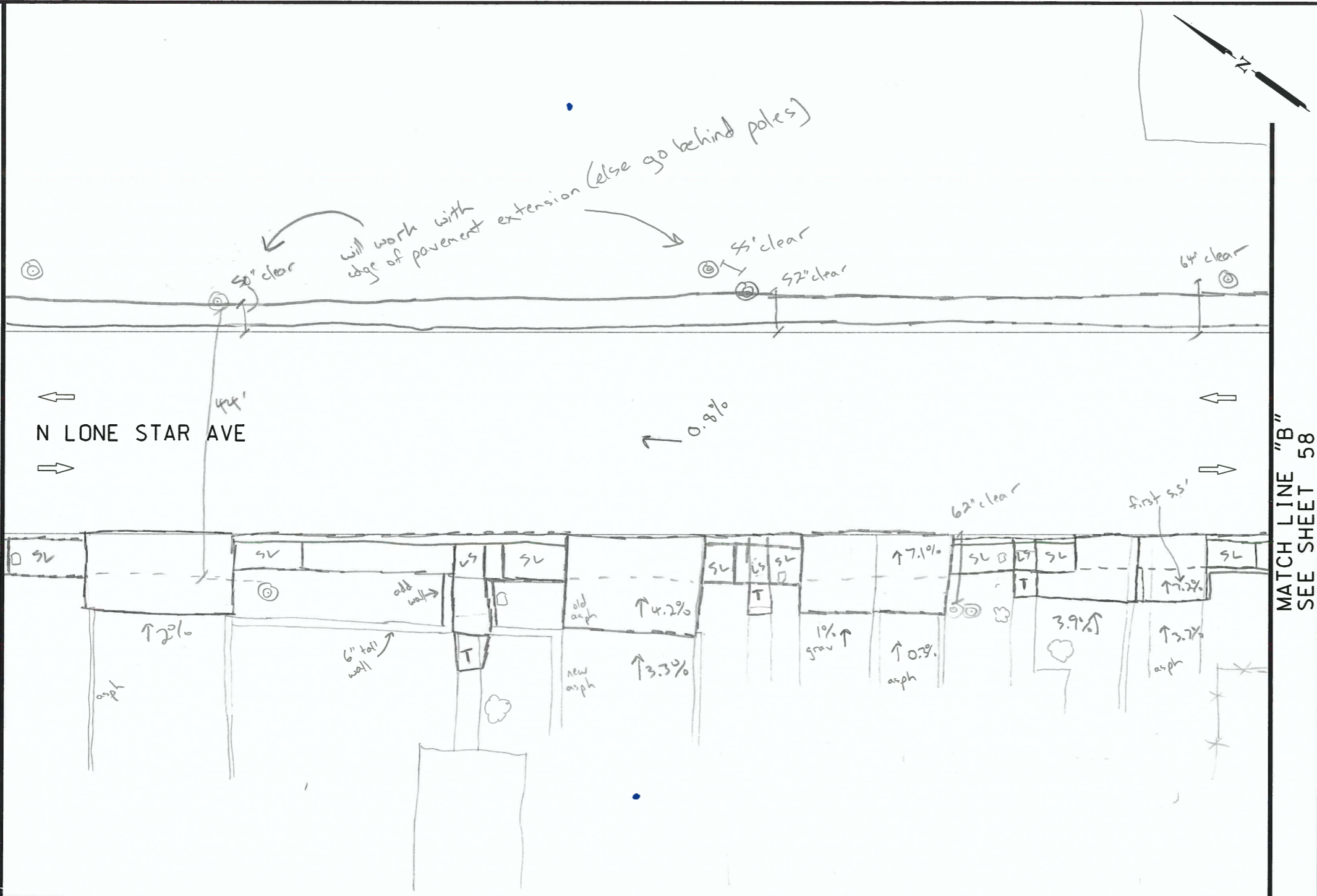


PLOTTED ON: 10/31/2016

DESIGN FILENAME: P:\1113800\Design\Civil\Roadway\1113800\_NB\_LoneStarAve\_SheetB.dgn

MATCH LINE "A"  
SEE SHEET 56

MATCH LINE "B"  
SEE SHEET 58



| ITEM | DESCRIPTION | UNIT | QTY |
|------|-------------|------|-----|
|------|-------------|------|-----|



NB\_16-025\_WS\_21

CF 1 1/4  
FD

- NOTES:
- \* FOR CONTRACTOR INFORMATION ONLY
  - 1. THE EXISTENCE AND LOCATION OF ALL UTILITIES AND DRAINAGE STRUCTURES INDICATED IN THE PLANS ARE TAKEN FROM THE BEST RECORDS AVAILABLE AND ARE NOT GUARANTEED TO BE ACCURATE. CONTRACTOR SHALL COORDINATE WITH ALL UTILITY COMPANIES TO FIELD VERIFY UTILITIES PRIOR TO BEGINNING CONSTRUCTION. DESIGN

INTERIM REVIEW  
DOCUMENT INCOMPLETE. NOT INTENDED FOR PERMIT, BIDDING OR CONSTRUCTION.  
ENGINEER: JOHN A. TYLER  
P.E. SERIAL NO: 105193  
DATE: 10/31/2016

REVIEW AND APPROVAL  
INTERIM REVIEW  
DOCUMENT INCOMPLETE. NOT INTENDED FOR PERMIT, BIDDING OR CONSTRUCTION.  
ENGINEER: JAMES A. LUTZ  
P.E. SERIAL NO: 84722  
DATE: 10/31/2016

NOT TO SCALE

| REV. NO. | DATE | DESCRIPTION | BY |
|----------|------|-------------|----|
|          |      |             |    |

**PAPE-DAWSON ENGINEERS**  
SAN ANTONIO | AUSTIN | HOUSTON | FORT WORTH | DALLAS  
2000 NW LOOP 410 | SAN ANTONIO, TX 78213 | 210.375.9000  
TBPE FIRM REGISTRATION #470 | TBPLS FIRM REGISTRATION #10028800

Texas Department of Transportation  
© 2016

CURB RAMP PROGRAM

LONE STAR AVE  
SIDEWALK SHEET B

SHEET 2 OF 5

SPECIAL NOTES & DETAILS

FOR ENVIRONMENTAL REVIEW ONLY

LEGEND

- |                            |                           |   |
|----------------------------|---------------------------|---|
| CAMERA POSITION            | LIGHT POLE                | LONGITUDINAL SLOPES MAY NOT EXCEED 5%. CROSS SLOPES MAY NOT EXCEED 2% |
| DRAINAGE FLOW ARROW        | LUMINAIRE STANDARD        | TRAFFIC FLOW  |
| FLARE                      | MAIL BOX                  | TRAFFIC SIGNAL BOX  |
| FIRE HYDRANT               | MANHOLE                   | TRAFFIC SIGNAL CONTROLLER   |
| GAS METER                  | NSPI NO SEPARATE PAY ITEM | TRAFFIC SIGNAL POLE   |
| GAS VALVE                  | PEDESTAL SIGNAL POLE      | TRANSFORMER   |
| GROUND BOX                 | PI POINT                  | TREE/BUSHES   |
| GUY ANCHOR                 | POWER/UTILITY POLE        | UTILITY PEDESTAL/MARKER   |
| IRRIGATION                 | R RAMP                    | UTILITY VAULT   |
| JUNCTION BOX               | RR RIPRAP (CONC)          | WATER METER   |
| L LANDING                  | SIGN                      | WATER VALVE   |
| L1 LANDING (COMMON)        | SODDING                   |   |
| LS LEVEL SIDEWALK (2% MAX) | T TRANSITION              |   |

| CHK | FED. RD. DIV. NO. | STATE  | CITY          | HIGHWAY N |         |           |
|-----|-------------------|--------|---------------|-----------|---------|-----------|
| CHK | 6                 | TEXAS  | NEW BRAUNFELS | VA        |         |           |
| DWG | DIST.             | COUNTY | CONT. NO.     | SECT. NO. | JOB NO. | SHEET NO. |
| CHK | SAT               | COMAL  |               |           |         | 57        |