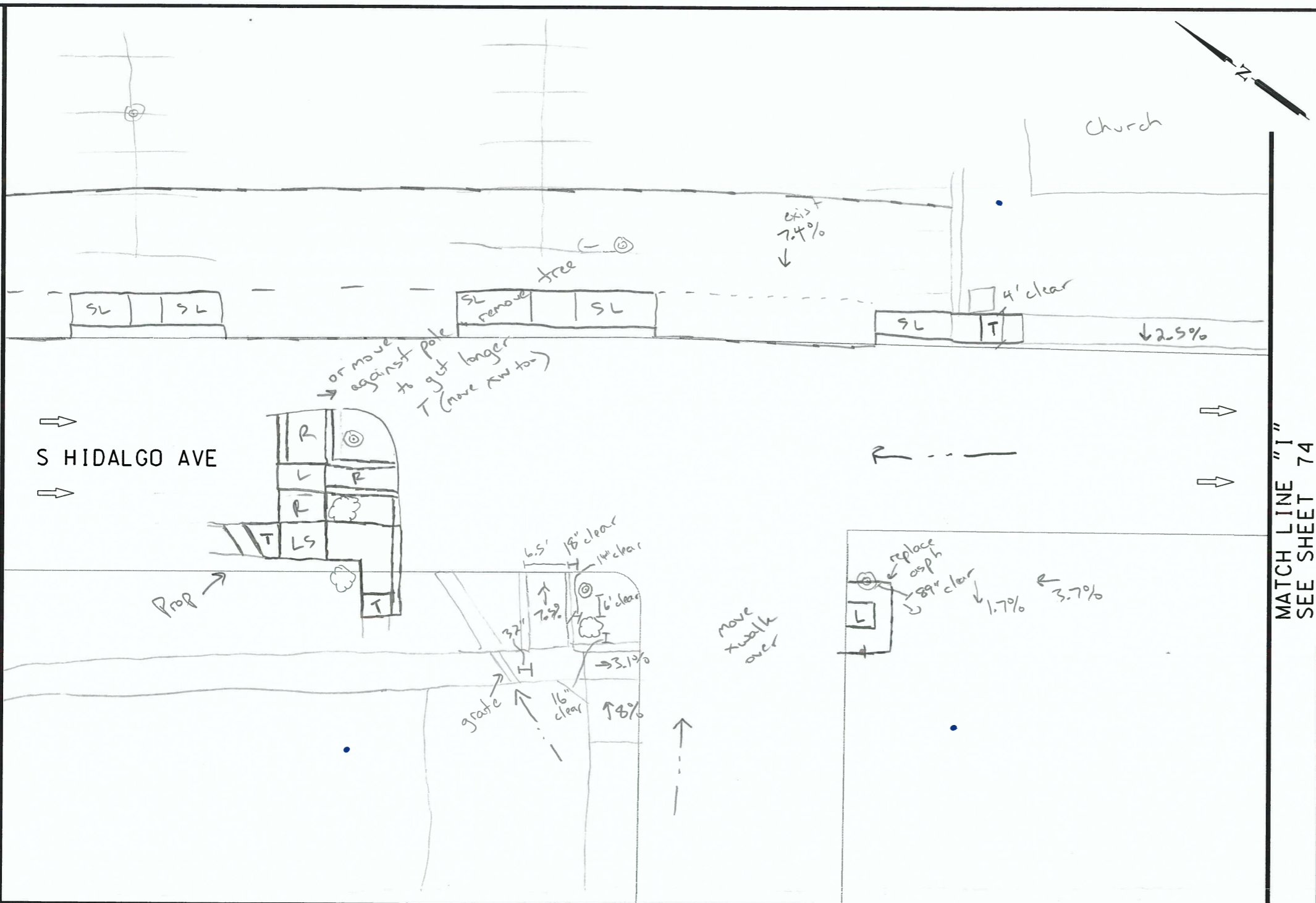


PLOTTED ON: 10/31/2016

DESIGN FILENAME: P:\11\38\00\Design\Civil\Roadway\1113800\_NB\_HidalgoAve\_Sheet I.dgn

MATCH LINE "H"  
SEE SHEET 72

MATCH LINE "I"  
SEE SHEET 74

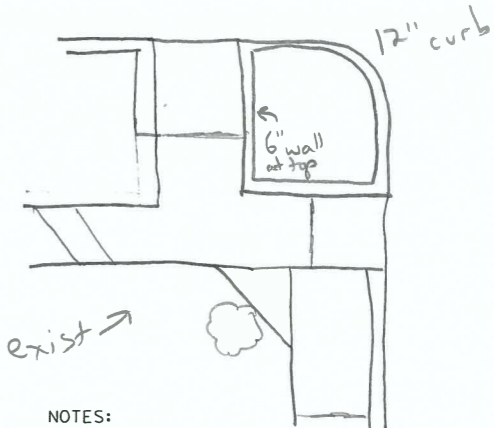


ITEM	DESCRIPTION	UNIT	QTY
------	-------------	------	-----



NB\_16-025\_WS\_37

CF 11/3  
FD



NOTES:

- \* FOR CONTRACTOR INFORMATION ONLY
- 1. THE EXISTENCE AND LOCATION OF ALL UTILITIES AND DRAINAGE STRUCTURES INDICATED IN THE PLANS ARE TAKEN FROM THE BEST RECORDS AVAILABLE AND ARE NOT GUARANTEED TO BE ACCURATE. CONTRACTOR SHALL COORDINATE WITH ALL UTILITY COMPANIES TO FIELD VERIFY UTILITIES PRIOR TO BEGINNING CONSTRUCTION. DESIGN

INTERIM REVIEW  
DOCUMENT INCOMPLETE. NOT INTENDED FOR PERMIT, BIDDING OR CONSTRUCTION.  
ENGINEER: JOHN A. TYLER  
P.E. SERIAL NO: 105193  
DATE: 10/31/2016

INTERIM REVIEW  
DOCUMENT INCOMPLETE. NOT INTENDED FOR PERMIT, BIDDING OR CONSTRUCTION.  
ENGINEER: JAMES A. LUTZ  
P.E. SERIAL NO: 84722  
DATE: 10/31/2016

NOT TO SCALE

REV. NO.	DATE	DESCRIPTION	BY



SAN ANTONIO | AUSTIN | HOUSTON | FORT WORTH | DALLAS  
2000 NW LOOP 410 | SAN ANTONIO, TX 78213 | 210.375.9000  
TBPPE FIRM REGISTRATION #470 | TBPPLS FIRM REGISTRATION #10028800



CURB RAMP PROGRAM

HIDALGO AVE  
SIDEWALK SHEET I

SHEET 9 OF 1

SPECIAL NOTES & DETAILS

FOR ENVIRONMENTAL REVIEW ONLY

LEGEND

CAMERA POSITION	LIGHT POLE	LONGITUDINAL SLOPES MAY NOT EXCEED 5%. CROSS SLOPES MAY NOT EXCEED 2%
DRAINAGE FLOW ARROW	LUMINAIRE STANDARD	TRAFFIC FLOW
FLARE	MAIL BOX	TRAFFIC SIGNAL BOX
FIRE HYDRANT	MANHOLE	TRAFFIC SIGNAL CONTROLLER
GAS METER	NSPI NO SEPARATE PAY ITEM	TRAFFIC SIGNAL POLE
GAS VALVE	PEDESTAL SIGNAL POLE	TRANSFORMER
GROUND BOX	PI POINT	TREE/BUSHES
GUY ANCHOR	POWER/UTILITY POLE	UTILITY PEDESTAL/MARKER
IRRIGATION	R RAMP	UTILITY VAULT
JUNCTION BOX	RR RIPRAP (CONC)	WATER METER
L LANDING	SIGN	WATER VALVE
L1 LANDING (COMMON)	SODDING	
LS LEVEL SIDEWALK (2% MAX)	T TRANSITION	