



**PUBLIC LIBRARY  
700 E. Common Street  
New Braunfels, TX 78130**

## **ADA SELF-EVALUATION FACILITY SURVEY**

Conducted by



## About This Report

This report has been developed as part of an overall self-evaluation and transition planning effort undertaken by the City of New Braunfels and as required by the Americans with Disabilities Act Title II Regulations for state and local government entities. The conditions cited within this report represent the findings of our team at the time of evaluation on May 11, 2021. Our survey included public areas and other areas where city programs are offered.

## ADA Standards

The building or facility was evaluated for compliance with the 2010 ADA Standards. It should be noted that any renovation or alteration projects that are undertaken at this time and in the future must be designed to comply with the 2010 ADA Standards (or the most current adopted standard in effect at the time).

## Prioritization

The non-compliant issues cited in this report have been assigned a prioritization for remediation – Priorities 1 through 4. This prioritization system is based upon priorities for barrier removal as published in the ADA Title III (§36.304). Although Title II entities are not required to undertake barrier removal steps in the same way as places of public accommodation, this system is considered a “best practice” for taking the necessary steps to bring buildings and facilities into compliance with the ADA.

Priority 1:	Accessible Approach and Entry
Priority 2:	Access to Goods and Services
Priority 3:	Toilet Rooms
Priority 4:	Additional Access

## Recommendations and Cost

For each non-compliant item cited, a recommendation for remediation is included along with a rough order of magnitude cost. It should be noted that in many instances, there may be more than one way to correct an issue. We have made every effort to suggest the most logical and least expensive method of correction; however, other methods may prove to be more easily accomplished or less expensive. Additionally, our recommendations are based upon our visual observations and may not reflect hidden conditions that might render our suggestions infeasible or less cost-effective. The costs provided take in to account materials and labor but do not include any professional design fees.

# New Braunfels Public Library

Prepared by Kim Goss

Jun 29, 2021

## Description

52 tasks in this report.

## Contents

#7 Priority 1: Accessible Routes.....	4
#11 Priority 1: Accessible Routes .....	5
#12 Priority 1: Accessible Routes.....	7
#15 Priority 1: Accessible Routes.....	8
#16 Priority 1: Accessible Routes.....	9
#19 Priority 1: Accessible Routes.....	10
#23 Priority 1: Accessible Routes.....	11
#45 Priority 1: Accessible Routes.....	12
#46 Priority 1: Accessible Routes.....	13
#47 Priority 1: Accessible Routes.....	14
#57 Priority 1: Accessible Routes.....	15
#58 Priority 1: Accessible Routes.....	16
#59 Priority 1: Accessible Routes.....	17
#60 Priority 1: Accessible Routes.....	18
#6 Priority 1: Curb Ramps .....	20
#10 Priority 1: Curb Ramps .....	22
#13 Priority 1: Curb Ramps .....	24
#14 Priority 1: Curb Ramps .....	25
#17 Priority 1: Curb Ramps .....	26

#18 Priority 1: Curb Ramps .....	28
#1 Priority 1: Parking .....	30
#4 Priority 1: Parking .....	32
#9 Priority 1: Parking .....	34
#56 Priority 1: Parking .....	35
#61 Priority 1: Parking .....	36
#62 Priority 1: Parking .....	37
#20 Priority 1: Loading Zones .....	39
#51 Priority 2: Accessible Routes .....	40
#52 Priority 2: Accessible Routes .....	41
#53 Priority 2: Accessible Routes .....	42
#54 Priority 2: Accessible Routes .....	43
#55 Priority 2: Accessible Routes .....	45
#36 Priority 2: Tables .....	46
#39 Priority 2: Tables .....	47
#40 Priority 2: Tables .....	48
#41 Priority 2: Counters .....	49
#43 Priority 2: Counters .....	50
#44 Priority 2: Counters .....	51
#38 Priority 2: Reach Range .....	52
#26 Priority 3: Baby Changing Stations .....	53
#35 Priority 3: Baby Changing Stations .....	54
#28 Priority 3: Toilet Compartments .....	56
#31 Priority 3: Toilet Compartments .....	57
#30 Priority 3: Grab Bars .....	59
#32 Priority 3: Grab Bars .....	61





#25 Priority 3: Mirrors ..... 63

#33 Priority 3: Mirrors ..... 64

#27 Priority 3: Protruding Objects ..... 65

#34 Priority 3: Protruding Objects ..... 67

#29 Priority 3: Water Closets..... 68

#24 Priority 4: Drinking Fountains ..... 69

#37 Priority 4: Vending Machines..... 70

## #7 Priority 1: Accessible Routes

### Status

Open

### Location

Route from East Parking

### Description

Sidewalk has a 1" gap between panels.

Recommendation: Fill gap with caulking material.

### Sheet

C3



### Cost Impact

100

### Photos



Kim Goss

May 11, 2021 11:33 AM



Kim Goss

May 11, 2021 11:33 AM

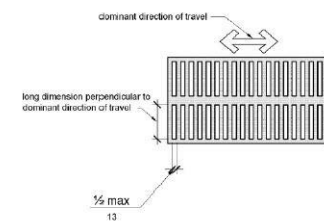


Figure 302.3 Elongated Openings in Floor or Ground Surfaces

302.3

Kim Goss

Jun 25, 2021 10:57 AM

## #11 Priority 1: Accessible Routes

### Status

Open

### Location

Route to Book Drop

### Description

The sidewalk has a cross slope of to 4.6% and changes in level of up to 1-3/4" in two locations.

Recommendation: Remove and replace length of sidewalk. (4panels, 132 SF)

### Sheet

C2



### Cost Impact

1320

### Photos



Photo May 11, 11 45 47 AM

Kim Goss

May 11, 2021 11:45 AM



Photo May 11, 11 46 01 AM

Kim Goss

May 11, 2021 11:46 AM



Photo May 11, 11 47 12 AM

Kim Goss

May 11, 2021 11:47 AM



Photo May 11, 11 47 18 AM

Kim Goss

May 11, 2021 11:47 AM



Photo May 11, 11 47 34 AM

Kim Goss

May 11, 2021 11:47 AM



Photo May 11, 11 47 40 AM

Kim Goss

May 11, 2021 11:47 AM



Photo May 11, 11 48 30 AM  
**Kim Goss**  
May 11, 2021 11:48 AM

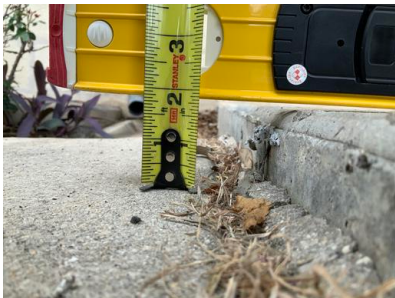


Photo May 11, 11 48 38 AM  
**Kim Goss**  
May 11, 2021 11:48 AM

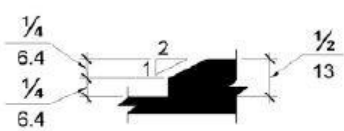


Figure 303.3 Beveled Change in Level

303.3(a)  
**Kim Goss**  
Jun 29, 2021 3:45 PM



## #12 Priority 1: Accessible Routes

### Status

Open

### Location

West Route from Public  
ROW

### Description

The route connecting to the public sidewalk has a cross slope of approximately 2.5%.

Recommendation: Remove and replace sidewalk. (25 SF)

Note: Due to the relatively low severity of the issue, this correction may be considered low priority.

### Sheet

C1



### Cost Impact

250

### Photos



Kim Goss

May 11, 2021 11:52 AM



Kim Goss

May 11, 2021 11:53 AM



Kim Goss

May 11, 2021 11:53 AM

## #15 Priority 1: Accessible Routes

### Status

Open

### Location

Route from West Parking

### Description

The sidewalk has a cross slope of approximately 3.1%.

Recommendation: Remove and replace sidewalk. (1 large panel, 120 SF)

### Photos



Kim Goss  
May 11, 2021 12:01 PM



Kim Goss  
May 11, 2021 12:01 PM



Kim Goss  
May 11, 2021 12:01 PM

### Sheet

C1



### Cost Impact

1200

## #16 Priority 1: Accessible Routes

### Status

Open

### Location

East Route from Public  
ROW

### Description

The route connecting to the  
public sidewalk has a cross  
slope of approximately 7.5%.

Recommendation: Remove  
and replace sidewalk. (25  
SF)

### Sheet

C1



### Cost Impact

250

### Photos



Kim Goss

May 11, 2021 12:08 PM



Kim Goss

May 11, 2021 12:08 PM



Kim Goss

May 11, 2021 12:08 PM



## #19 Priority 1: Accessible Routes

### Status

Open

### Location

East Route from Public  
ROW

### Description

The sidewalk around the tree  
has a cross slope of up to  
3.1%.

Recommendation: Remove  
and replace sidewalk.  
(2 panels, 96 SF)

### Photos

### Sheet

C1



### Cost Impact

960



Photo May 11, 12 13 48 PM

Kim Goss

May 11, 2021 12:13 PM



Photo May 11, 12 13 54 PM

Kim Goss

May 11, 2021 12:13 PM



Photo May 11, 12 15 25 PM

Kim Goss

May 11, 2021 12:15 PM



Photo May 11, 12 15 34 PM

Kim Goss

May 11, 2021 12:15 PM



Photo May 11, 12 15 55 PM

Kim Goss

May 11, 2021 12:15 PM



Photo May 11, 12 16 04 PM

Kim Goss

May 11, 2021 12:16 PM



## #23 Priority 1: Accessible Routes

### Status

Open

### Location

Route to Reading Garden

### Description

A portion of sidewalk leading to the reading garden has a cross slope of approximately 3.1%.

Recommendation: Remove and replace sidewalk. (One panel, 42 SF)

### Photos



Photo May 11, 12 22 50 PM

Kim Goss

May 11, 2021 12:22 PM



Kim Goss

May 11, 2021 12:23 PM

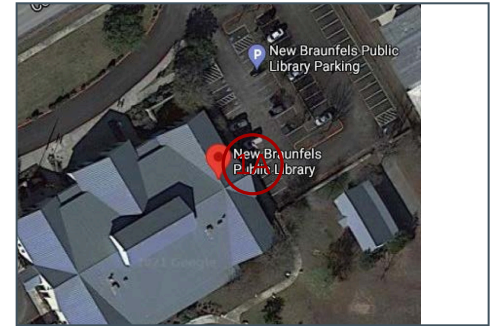


Kim Goss

May 11, 2021 12:23 PM

### Sheet

C1



### Cost Impact

420

## #45 Priority 1: Accessible Routes

### Status

Open

### Location

East Route from Public  
ROW

### Description

The accessible route from the public sidewalk across the east drive way has a cross slope of approximately 3.3%.

Recommendation: Replace asphalt along this route. (100 SF)

### Photos



Photo May 11, 12 10 27 PM

Kim Goss

May 11, 2021 12:10 PM



Photo May 11, 12 10 34 PM

Kim Goss

May 11, 2021 12:10 PM

### Sheet

C1



### Cost Impact

1000

#46 Priority 1: Accessible Routes

Status  
Open

Sheet  
C1

Location  
Route to Reading Garden

Description  
A portion of sidewalk leading to the reading garden has a 1/2" abrupt change in level.

Recommendation: Grind edge to a maximum 1:2 bevel.



Cost Impact  
200

Photos



Photo May 11, 12 24 32 PM  
Kim Goss  
May 11, 2021 12:24 PM



Photo May 11, 12 24 44 PM  
Kim Goss  
May 11, 2021 12:24 PM



Photo May 11, 12 24 50 PM  
Kim Goss  
May 11, 2021 12:24 PM

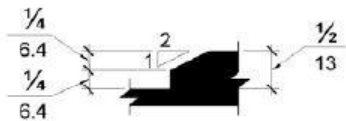


Figure 303.3 Beveled Change in Level  
303.3(a)  
Kim Goss  
Jun 25, 2021 10:10 AM



## #47 Priority 1: Accessible Routes

### Status

Open

### Location

Route to Reading Garden

### Description

The sidewalk has a 1/2" abrupt change in level between panels.

Recommendation: Grind edge to a maximum 1:2 slope.

### Sheet

C1



### Cost Impact

200

### Photos



Photo May 11, 12 26 07 PM

Kim Goss

May 11, 2021 12:26 PM



Photo May 11, 12 26 15 PM

Kim Goss

May 11, 2021 12:26 PM



Photo May 11, 12 26 21 PM

Kim Goss

May 11, 2021 12:26 PM

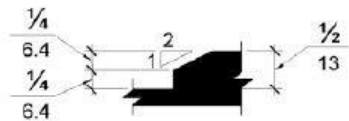


Figure 303.3 Beveled Change in Level

303.3(a)

Kim Goss

Jun 25, 2021 10:58 AM

## #57 Priority 1: Accessible Routes

### Status

Open

### Location

Route from East Parking

### Description

Route has an approximate 1/2" abrupt change in level at joint.

Recommendation: Grind edge to a maximum 1:2 bevel.

### Photos



Photo May 11, 11 32 57 AM

Kim Goss

May 11, 2021 11:32 AM

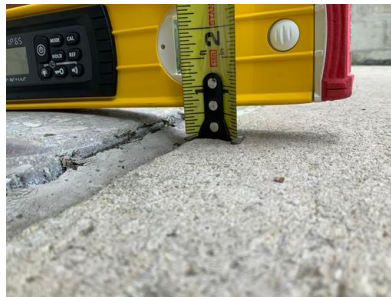


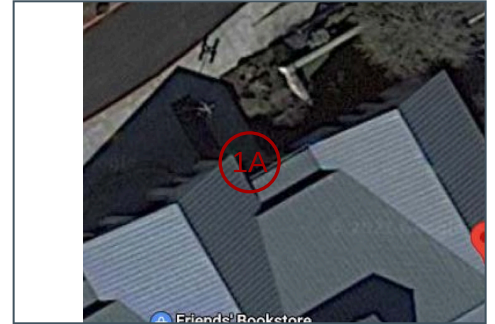
Photo May 11, 11 33 05 AM

Kim Goss

May 11, 2021 11:33 AM

### Sheet

C3



### Cost Impact

200

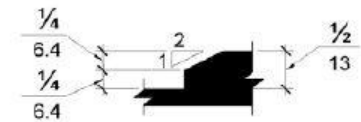


Figure 303.3 Beveled Change in Level

303.3(a)

Kim Goss

Jun 25, 2021 10:55 AM

## #58 Priority 1: Accessible Routes

### Status

Open

### Location

Route from West Parking

### Description

Route has an approximate 1/2" abrupt change in level at joint.

Recommendation: Grind edge to a maximum 1:2 bevel.

### Sheet

C1



### Cost Impact

200

### Photos

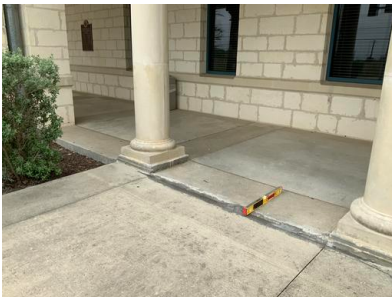


Photo May 11, 12 02 37 PM

Kim Goss

May 11, 2021 12:02 PM



Photo May 11, 12 02 54 PM

Kim Goss

May 11, 2021 12:02 PM



Photo May 11, 12 03 01 PM

Kim Goss

May 11, 2021 12:03 PM

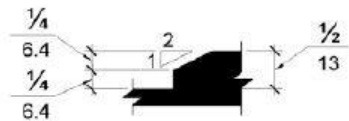


Figure 303.3 Beveled Change in Level

303.3(a)

Kim Goss

Jun 25, 2021 11:01 AM

## #59 Priority 1: Accessible Routes

### Status

Open

### Location

Route from West Parking

### Description

Sidewalk has a 1" gap between panels.

Recommendation: Fill gap with caulking material.

### Sheet

C1



### Cost Impact

100

### Photos



Photo May 11, 12 00 14 PM

Kim Goss

May 11, 2021 12:00 PM



Photo May 11, 12 01 03 PM

Kim Goss

May 11, 2021 12:01 PM

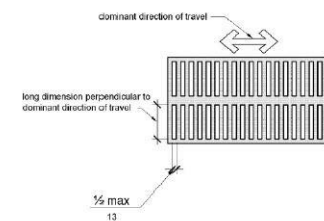


Figure 302.3 Elongated Openings in Floor or Ground Surfaces

302.3

Kim Goss

Jun 25, 2021 11:04 AM



## #60 Priority 1: Accessible Routes

### Status

Open

### Location

Route from West Parking

### Description

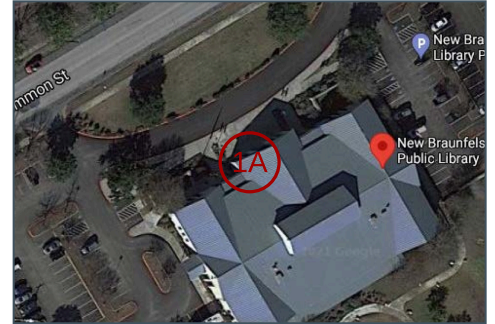
The covered approach to the main entrance has a cross slope of up to 2.7%.

Recommendation: Remove and replace sidewalk. (2 large panels, 160 SF)

Note: Due to the relatively low severity of the issue, this correction may be considered low priority.

### Sheet

C1



### Cost Impact

1600

### Photos



Photo May 11, 12 03 41 PM

Kim Goss

May 11, 2021 12:03 PM



Photo May 11, 12 03 48 PM

Kim Goss

May 11, 2021 12:03 PM

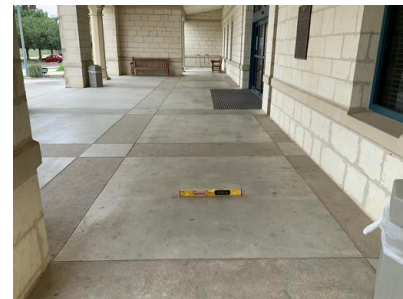


Photo May 11, 12 04 01 PM

Kim Goss

May 11, 2021 12:04 PM





Photo May 11, 12 04 08 PM

**Kim Goss**

May 11, 2021 12:04 PM

---

## #6 Priority 1: Curb Ramps

### Status

Open

### Location

East Parking Lot

### Description

The landing and both runs of the parallel curb ramp have a cross slope ranging from 3.2% to 4%.

Recommendation: Remove and replace curb ramp.

### Sheet

C3



### Cost Impact

5000

### Photos



Photo May 11, 11 23 38 AM

Kim Goss

May 11, 2021 11:23 AM



Photo May 11, 11 23 50 AM

Kim Goss

May 11, 2021 11:23 AM



Photo May 11, 11 24 05 AM

Kim Goss

May 11, 2021 11:24 AM



Photo May 11, 11 24 14 AM

Kim Goss

May 11, 2021 11:24 AM



Photo May 11, 11 24 38 AM

Kim Goss

May 11, 2021 11:24 AM



Photo May 11, 11 24 48 AM

Kim Goss

May 11, 2021 11:24 AM



Photo May 11, 11 25 08 AM  
**Kim Goss**  
May 11, 2021 11:25 AM



Photo May 11, 11 25 15 AM  
**Kim Goss**  
May 11, 2021 11:25 AM



Photo May 11, 11 26 38 AM  
**Kim Goss**  
May 11, 2021 11:26 AM



Photo May 11, 11 26 47 AM  
**Kim Goss**  
May 11, 2021 11:26 AM



## #10 Priority 1: Curb Ramps

### Status

Open

### Location

West Parking Lot

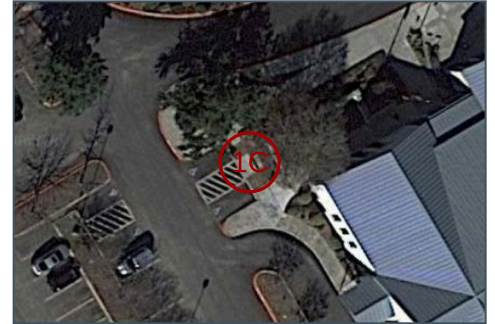
### Description

The landing and both runs of the parallel curb ramp have a cross slope ranging from 3.1% to 4.9%.

Recommendation: Remove and replace curb ramp.

### Sheet

C2



### Cost Impact

5000

### Photos



Photo May 11, 11 42 57 AM

Kim Goss

May 11, 2021 11:42 AM



Photo May 11, 11 43 28 AM

Kim Goss

May 11, 2021 11:43 AM



Photo May 11, 11 43 36 AM

Kim Goss

May 11, 2021 11:43 AM



Photo May 11, 11 43 55 AM

Kim Goss

May 11, 2021 11:43 AM



Photo May 11, 11 44 00 AM

Kim Goss

May 11, 2021 11:44 AM



Photo May 11, 11 44 12 AM

Kim Goss

May 11, 2021 11:44 AM



Photo May 11, 11 44 18 AM  
**Kim Goss**  
May 11, 2021 11:44 AM

---

## #13 Priority 1: Curb Ramps

### Status

Open

### Sheet

C1

### Location

West Route from Public  
ROW

### Description

The curb ramp at the west  
driveway has a cross slope  
of approximately 4.8%.

Recommendation: Remove  
and replace curb ramp.



### Cost Impact

2500

### Photos



Kim Goss

May 11, 2021 11:55 AM



Kim Goss

May 11, 2021 11:55 AM



## #14 Priority 1: Curb Ramps

### Status

Open

### Location

West Route from Public  
ROW

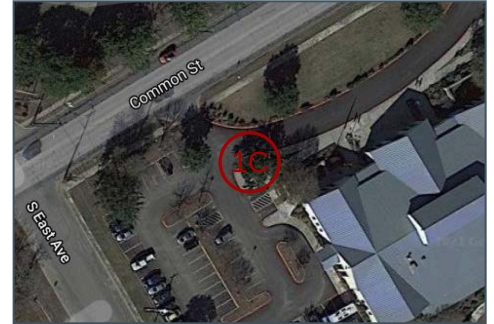
### Description

The parallel curb ramp at the west end of the circle drive has running slopes of 9 and 9.7% on each side.

Recommendation: Remove and replace curb ramp.

### Sheet

C1



### Cost Impact

5000

### Photos



Photo May 11, 11 55 59 AM

Kim Goss

May 11, 2021 11:56 AM



Kim Goss

May 11, 2021 11:56 AM



Kim Goss

May 11, 2021 11:56 AM



Photo May 11, 11 56 53 AM

Kim Goss

May 11, 2021 11:56 AM



Photo May 11, 11 57 00 AM

Kim Goss

May 11, 2021 11:57 AM

## #17 Priority 1: Curb Ramps

### Status

Open

### Location

East Route from Public  
ROW

### Description

The curb ramp at the east driveway has a cross slope of approximately 2.7% and a 3/4" change in level at the bottom.

Recommendation: Remove and replace curb ramp.

### Photos



Kim Goss

May 11, 2021 12:09 PM



Kim Goss

May 11, 2021 12:09 PM



Photo May 11, 12 09 47 PM

Kim Goss

May 11, 2021 12:09 PM

### Sheet

C1



### Cost Impact

2500





Photo May 11, 12 09 53 PM

**Kim Goss**

May 11, 2021 12:09 PM

---

## #18 Priority 1: Curb Ramps

### Status

Open

### Location

East Route from Public  
ROW

### Description

The parallel curb ramp at the east end of the circle drive has excessive cross slopes on both runs and the landing and excessive running slopes on the right-hand run.

Recommendation: Remove and replace curb ramp.

### Sheet

C1



### Cost Impact

5000

### Photos



Photo May 11, 12 11 44 PM

Kim Goss

May 11, 2021 12:11 PM



Photo May 11, 12 12 00 PM

Kim Goss

May 11, 2021 12:12 PM



Photo May 11, 12 12 09 PM

Kim Goss

May 11, 2021 12:12 PM



Photo May 11, 12 12 18 PM  
**Kim Goss**  
May 11, 2021 12:12 PM



Photo May 11, 12 12 25 PM  
**Kim Goss**  
May 11, 2021 12:12 PM



**Kim Goss**  
May 11, 2021 12:12 PM



Photo May 11, 12 13 32 PM  
**Kim Goss**  
May 11, 2021 12:13 PM

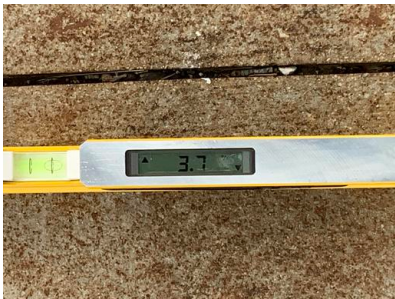


Photo May 11, 12 13 38 PM  
**Kim Goss**  
May 11, 2021 12:13 PM



## #1 Priority 1: Parking

**Status**  
Open

**Location**  
East Parking Lot

**Description**  
The three accessible spaces and access aisles facing the building have running slopes of 2.7% to 4.4%.

**Recommendation:** Replace asphalt surface.

**Sheet**  
C3



**Cost Impact**  
10000

### Photos



Photo May 11, 11 08 28 AM  
**Kim Goss**  
May 11, 2021 11:08 AM



Photo May 11, 11 09 57 AM  
**Kim Goss**  
May 11, 2021 11:09 AM

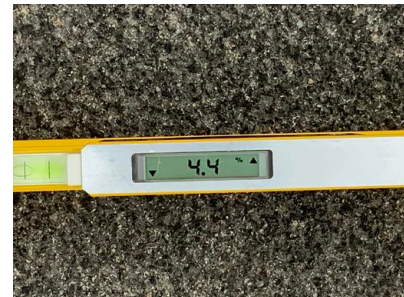


Photo May 11, 11 10 04 AM  
**Kim Goss**  
May 11, 2021 11:10 AM



Photo May 11, 11 13 52 AM  
**Kim Goss**  
May 11, 2021 11:13 AM



Photo May 11, 11 14 01 AM  
**Kim Goss**  
May 11, 2021 11:14 AM



Photo May 11, 11 15 00 AM  
**Kim Goss**  
May 11, 2021 11:15 AM



Photo May 11, 11 15 10 AM  
**Kim Goss**  
May 11, 2021 11:15 AM



Photo May 11, 11 16 49 AM  
**Kim Goss**  
May 11, 2021 11:16 AM



Photo May 11, 11 16 59 AM  
**Kim Goss**  
May 11, 2021 11:16 AM



## #4 Priority 1: Parking

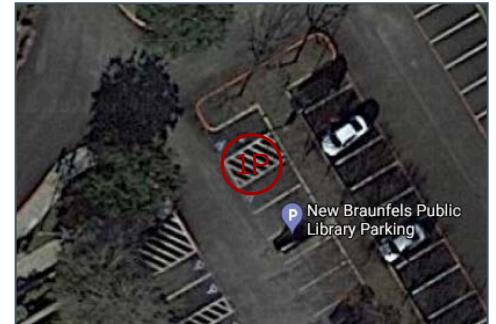
**Status**  
Open

**Location**  
East Parking Lot

**Description**  
The two accessible spaces and access aisle across the drive have a running slope of 2.6% to 3.8%.

**Recommendation:** Replace asphalt surface.

**Sheet**  
C3



**Cost Impact**  
6500

## Photos



Photo May 11, 11 08 15 AM  
**Kim Goss**  
May 11, 2021 11:08 AM



Photo May 11, 11 19 06 AM  
**Kim Goss**  
May 11, 2021 11:19 AM



Photo May 11, 11 19 16 AM  
**Kim Goss**  
May 11, 2021 11:19 AM



Photo May 11, 11 20 29 AM  
**Kim Goss**  
May 11, 2021 11:20 AM



Photo May 11, 11 20 41 AM  
**Kim Goss**  
May 11, 2021 11:20 AM



Photo May 11, 11 21 44 AM  
**Kim Goss**  
May 11, 2021 11:21 AM

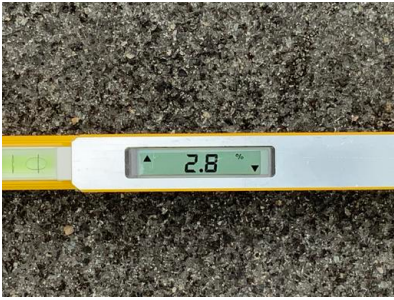


Photo May 11, 11 21 56 AM

**Kim Goss**

May 11, 2021 11:21 AM

---

## #9 Priority 1: Parking

### Status

Open

### Sheet

C2

### Location

West Parking Lot

### Description

The northernmost accessible space has an uneven surface and a cross slope of approximately 2.8%.

Recommendation: Replace asphalt paving and restripe.



### Cost Impact

3000

### Photos



Photo May 11, 11 38 17 AM

**Kim Goss**

May 11, 2021 11:38 AM



Photo May 11, 11 38 27 AM

**Kim Goss**

May 11, 2021 11:38 AM



## #56 Priority 1: Parking

### Status

Open

### Location

Parking - General

### Description

Of the 9 accessible parking spaces provided, only one is designated as a van space.

Recommendation: Add a van designation sign to at least one more space in either the east or west lot with an overall width of 16' (8'8" or 11'5").

### Sheet

C3



### Cost Impact

100

### Photos



Photo May 11, 11 08 15 AM

Kim Goss

May 11, 2021 11:08 AM



Photo May 11, 11 35 17 AM

Kim Goss

May 11, 2021 11:35 AM



Photo May 11, 11 35 28 AM

Kim Goss

May 11, 2021 11:35 AM

## #61 Priority 1: Parking

### Status

Open

### Location

West Parking Lot

### Description

The vertical sign at the southernmost accessible parking space is mounted with the bottom of the sign less than 60" high.

Recommendation:  
Reposition sign.

### Sheet

C2



### Cost Impact

100

### Photos



Photo May 11, 11 40 47 AM

Kim Goss

May 11, 2021 11:40 AM



Photo May 11, 11 40 56 AM

Kim Goss

May 11, 2021 11:40 AM



Photo May 11, 11 42 57 AM

Kim Goss

May 11, 2021 11:42 AM

## #62 Priority 1: Parking

**Status**  
Open

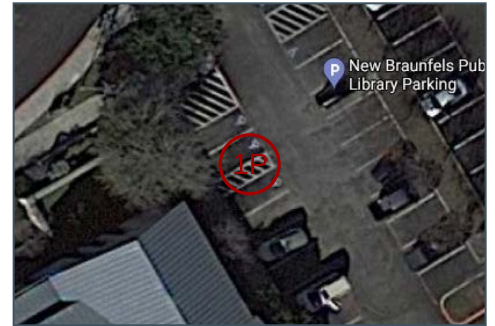
**Location**  
East Parking Lot

**Description**  
The vertical parking signs at the three spaces facing the building are mounted less than 60" to the bottom.

**Recommendation:**  
Reposition signs with the bottom at least 60" high.

### Photos

**Sheet**  
C3



**Cost Impact**  
300



Photo May 11, 11 08 28 AM  
**Kim Goss**  
May 11, 2021 11:08 AM



Photo May 11, 11 12 33 AM  
**Kim Goss**  
May 11, 2021 11:12 AM



Photo May 11, 11 12 43 AM  
**Kim Goss**  
May 11, 2021 11:12 AM



Photo May 11, 11 15 30 AM  
**Kim Goss**  
May 11, 2021 11:15 AM



Photo May 11, 11 15 40 AM  
**Kim Goss**  
May 11, 2021 11:15 AM

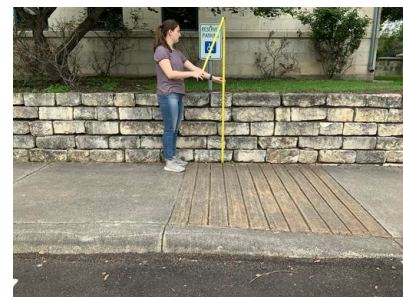


Photo May 11, 11 17 36 AM  
**Kim Goss**  
May 11, 2021 11:17 AM





Photo May 11, 11 17 44 AM

**Kim Goss**

May 11, 2021 11:17 AM

---



## #20 Priority 1: Loading Zones

### Status

Open

### Location

Book Drop

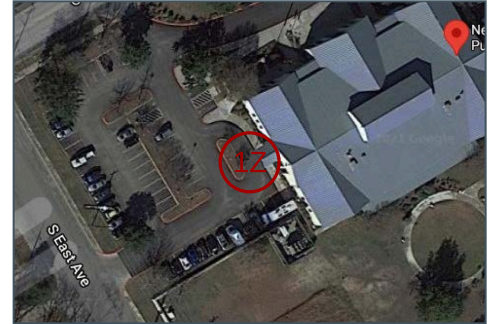
### Description

The covered vehicular area at the Book Drop has a cross slope of approximately 5.7%.

Recommendation: Remove and replace paving in this area to ensure a maximum slope of 2% in all directions. Stripe access aisle. (260 SF)

### Sheet

C1



### Cost Impact

3500

### Photos



Photo May 11, 12 19 22 PM

Kim Goss

May 11, 2021 12:19 PM



Kim Goss

May 11, 2021 12:21 PM



Kim Goss

May 11, 2021 12:21 PM

## #51 Priority 2: Accessible Routes

### Status

Open

### Location

Reading Garden

### Description

Sidewalk has a cross slope of up to 2.6%.

Recommendation: Remove and replace sidewalk. (1 panel, 72 SF)

Note: Due to the relatively low severity of the issue, this correction may be considered low priority.

### Sheet

C1



### Cost Impact

720

### Photos



Photo May 11, 12 36 50 PM

Kim Goss

May 11, 2021 12:36 PM

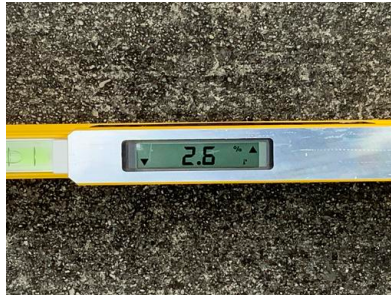


Photo May 11, 12 36 56 PM

Kim Goss

May 11, 2021 12:36 PM

## #52 Priority 2: Accessible Routes

### Status

Open

### Location

Reading Garden

### Description

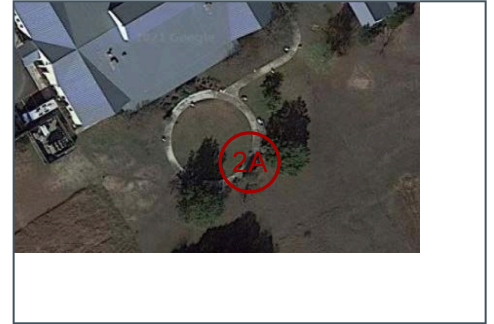
Sidewalk has a cross slope of up to 2.6%.

Recommendation: Remove and replace sidewalk. (1 panel, 72 SF)

Note: Due to the relatively low severity of the issue, this correction may be considered low priority.

### Sheet

C1



### Cost Impact

720

### Photos



Photo May 11, 12 33 49 PM

Kim Goss

May 11, 2021 12:33 PM



Photo May 11, 12 33 56 PM

Kim Goss

May 11, 2021 12:33 PM

## #53 Priority 2: Accessible Routes

### Status

Open

### Location

Reading Garden

### Description

Sidewalk has a 1/2" abrupt change in level between panels.

Recommendation: Grind edge to a maximum 1:2 bevel.

### Sheet

C1



### Cost Impact

200

### Photos



Photo May 11, 12 32 43 PM

Kim Goss

May 11, 2021 12:32 PM



Photo May 11, 12 32 49 PM

Kim Goss

May 11, 2021 12:32 PM



Photo May 11, 12 33 02 PM

Kim Goss

May 11, 2021 12:33 PM

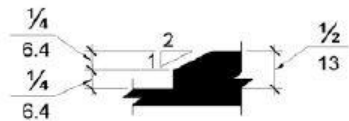


Figure 303.3 Beveled Change in Level

303.3(a)

Kim Goss

Jun 25, 2021 10:59 AM



## #54 Priority 2: Accessible Routes

### Status

Open

### Location

Reading Garden

### Description

Sidewalk has a cross slope of up to 2.7%.

Recommendation: Remove and replace sidewalk. (3 panels, 168 SF)

Note: Due to the relatively low severity of the issue, this correction may be considered low priority.

### Sheet

C1



### Cost Impact

1680

### Photos



Photo May 11, 12 28 05 PM

Kim Goss

May 11, 2021 12:28 PM



Photo May 11, 12 28 12 PM

Kim Goss

May 11, 2021 12:28 PM



Photo May 11, 12 29 10 PM

Kim Goss

May 11, 2021 12:29 PM



Photo May 11, 12 29 19 PM

**Kim Goss**

May 11, 2021 12:29 PM

---

## #55 Priority 2: Accessible Routes

**Status**  
Open

**Location**  
Reading Garden

**Description**  
Sidewalk has three locations with an approximate 1" gap between panels.

**Recommendation:** Fill gaps with caulking material.

**Sheet**  
C1



**Cost Impact**  
300

### Photos



Photo May 11, 12 26 56 PM  
**Kim Goss**  
May 11, 2021 12:26 PM



Photo May 11, 12 27 03 PM  
**Kim Goss**  
May 11, 2021 12:27 PM



Photo May 11, 12 27 46 PM  
**Kim Goss**  
May 11, 2021 12:27 PM



Photo May 11, 12 30 10 PM  
**Kim Goss**  
May 11, 2021 12:30 PM

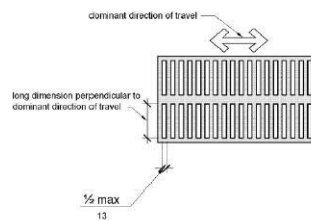


Figure 302.3 Elongated Openings in Floor or Ground Surfaces  
302.3  
**Kim Goss**  
Jun 25, 2021 10:58 AM

## #36 Priority 2: Tables

Status  
Open

Location  
Children's Library

Description  
The computer tables are 24-3/4" high and have a knee space height of 23-1/4".

Recommendation: Install at least one computer station with a counter height of 26-30" and a knee space height of 24" minimum for children's use.

### Photos

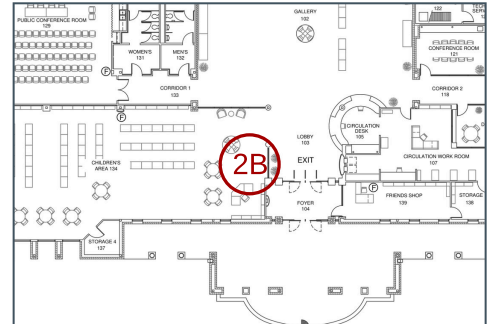


Kim Goss  
May 11, 2021 2:12 PM



Kim Goss  
May 11, 2021 2:12 PM

Sheet  
A1



Cost Impact  
450



## #39 Priority 2: Tables

**Status**  
Open

**Location**  
Stacks

### Description

The round tables throughout the stacks area do not have accessible toe space depth below.

Recommendation: Install at least one accessible table.

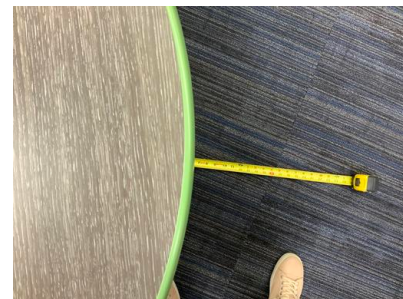
### Photos



Kim Goss  
May 11, 2021 2:21 PM



Kim Goss  
May 11, 2021 2:21 PM



Kim Goss  
May 11, 2021 2:21 PM



Kim Goss  
May 11, 2021 2:27 PM

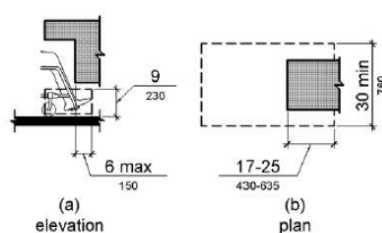
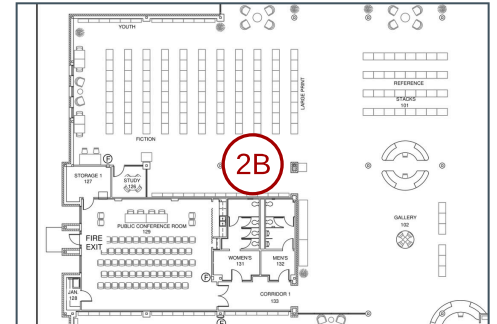


Figure 306.2 Toe Clearance

306.2  
Kim Goss  
Jun 25, 2021 2:31 PM

**Sheet**  
A1



**Cost Impact**  
450

#40 Priority 2: Tables

Status  
Open

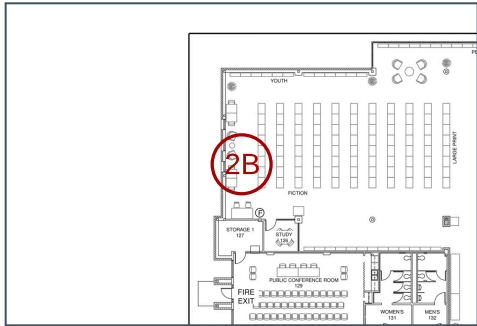
Location  
Teen Area

Description  
Booth tables do not have adequate toe clearance for a forward approach.

Recommendation: Install at least one accessible booth table.

Photos

Sheet  
A1



Cost Impact  
450



Kim Goss  
May 11, 2021 2:24 PM



Kim Goss  
May 11, 2021 2:24 PM



Kim Goss  
May 11, 2021 2:24 PM



Kim Goss  
May 11, 2021 2:24 PM

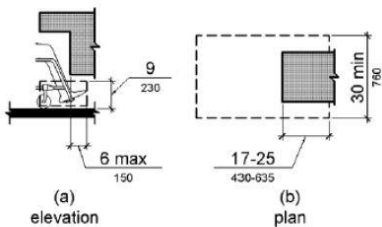


Figure 306.2 Toe Clearance

306.2  
Kim Goss  
Jun 25, 2021 2:31 PM

## #41 Priority 2: Counters

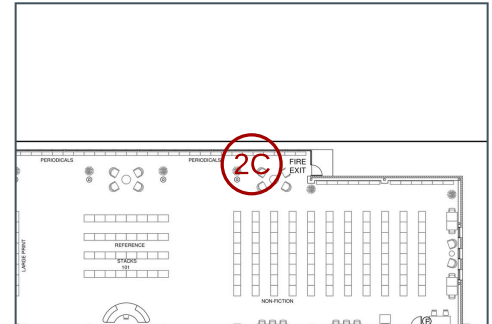
**Status**  
Open

**Location**  
Stacks

**Description**  
The charging station counter is 43" high.

Recommendation: Modify a portion of the counter to a maximum height of 34".

**Sheet**  
A1



**Cost Impact**  
7500

### Photos



Photo May 11, 2 25 43 PM  
**Kim Goss**  
May 11, 2021 2:25 PM



Photo May 11, 2 25 48 PM  
**Kim Goss**  
May 11, 2021 2:25 PM



Photo May 11, 2 25 57 PM  
**Kim Goss**  
May 11, 2021 2:25 PM



Photo May 11, 2 26 08 PM  
**Kim Goss**  
May 11, 2021 2:26 PM



**Kim Goss**  
May 11, 2021 2:27 PM



## #43 Priority 2: Counters

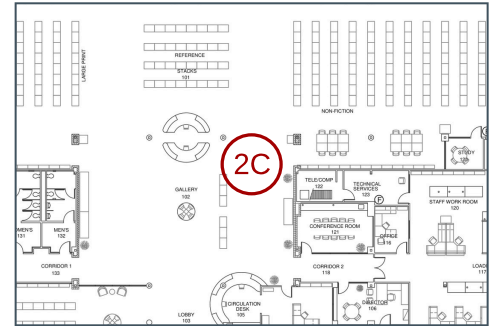
**Status**  
Open

**Location**  
Catalog Computers

**Description**  
The catalog computers are located on a 41-1/2" high counter with no knee and toe space.

**Recommendation:** Relocate at least one computer to an accessible table.

**Sheet**  
A1



**Cost Impact**  
450

## Photos



Kim Goss  
May 11, 2021 2:32 PM



Kim Goss  
May 11, 2021 2:32 PM



Kim Goss  
May 11, 2021 2:32 PM



#44 Priority 2: Counters

Status  
Open

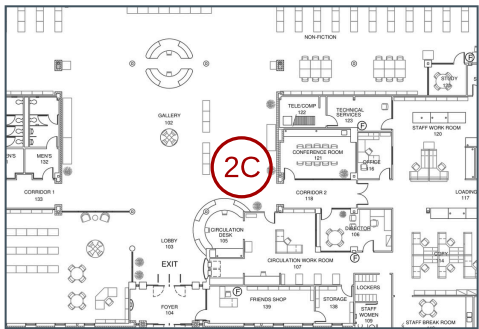
Location  
Library Card Sign Up

Description  
The self-serve library card sign-up station has a counter height of 38-1/2".

Recommendation: Lower the counter to 34" high maximum with compliant knee and toe space below.

Photos

Sheet  
A1



Cost Impact  
450



Kim Goss  
May 11, 2021 2:34 PM



Kim Goss  
May 11, 2021 2:34 PM



Kim Goss  
May 11, 2021 2:34 PM

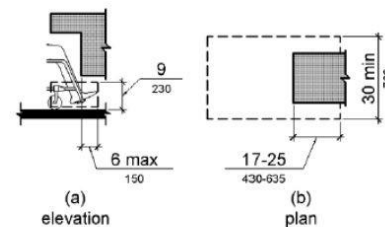


Figure 306.2 Toe Clearance

306.2  
Kim Goss  
Jun 25, 2021 2:27 PM

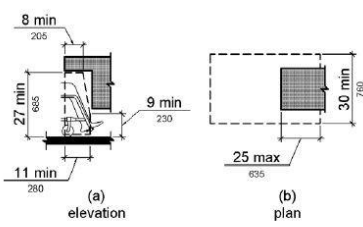


Figure 306.3 Knee Clearance

306.3  
Kim Goss  
Jun 25, 2021 2:27 PM

## #38 Priority 2: Reach Range

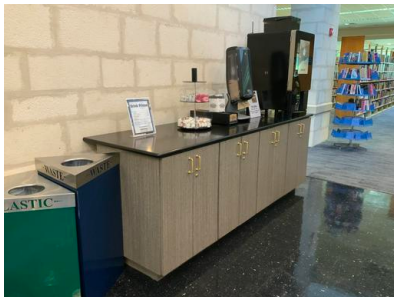
Status  
Open

Location  
Coffee Bar

Description  
The coffee bar counter is 36" high.

Recommendation: Lower the counter to 34" high maximum to allow reach to self-serve elements.

### Photos



Kim Goss  
May 11, 2021 2:19 PM



Kim Goss  
May 11, 2021 2:19 PM



Kim Goss  
May 11, 2021 2:19 PM

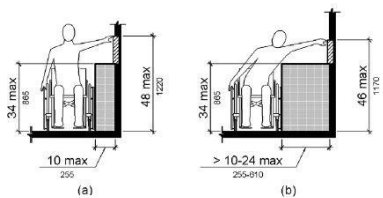


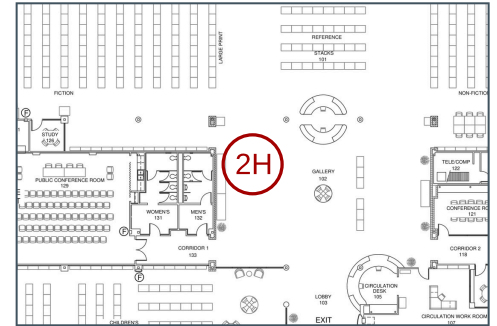
Figure 308.3.2 Obstructed High Side Reach

308.3.2

Kim Goss

Jun 25, 2021 2:24 PM

Sheet  
A1



Cost Impact  
3500

## #26 Priority 3: Baby Changing Stations

### Status

Open

### Location

Women's Restroom

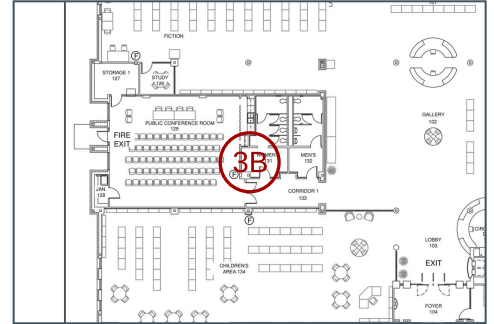
### Description

The baby changing table has a rim height of 37".

Recommendation: Modify the table to have a maximum height of 34".

### Sheet

A1



### Cost Impact

3500

### Photos



Kim Goss

May 11, 2021 1:50 PM



Kim Goss

May 11, 2021 1:50 PM

## #35 Priority 3: Baby Changing Stations

### Status

Open

### Location

Men's Restroom

### Description

The baby changing table requires a reach of 52-1/2" to open and is located within the required maneuvering area of the door.

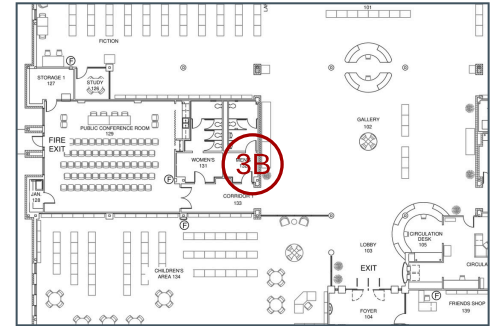
(Please note that TDLR considers baby changing stations to be protruding objects in their open position where the bottom of the table is more than 27" high. In this instance, the table obstructs the door maneuvering clearance in the open position.)

Recommendation: Relocate baby changing station outside of the door maneuvering area and position with the handle no higher than 48".

### Photos

### Sheet

A1



### Cost Impact

450





Kim Goss  
May 11, 2021 2:07 PM



Kim Goss  
May 11, 2021 2:07 PM



Kim Goss  
May 11, 2021 2:07 PM

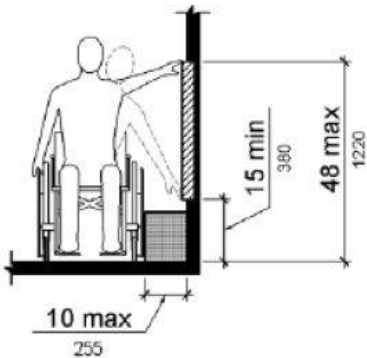


Figure 308.3.1 Unobstructed Side Reach

308.3.1  
Kim Goss  
Jun 25, 2021 2:54 PM

## #28 Priority 3: Toilet Compartments

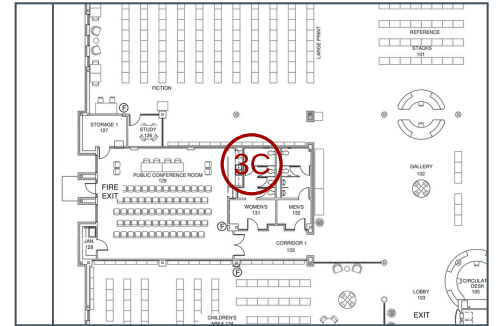
**Status**  
Open

**Location**  
Women's Restroom

**Description**  
The door to the wheelchair accessible stall has only 6" of clearance past the latch on the pull side. And no door pull is installed on the inside of the stall door.

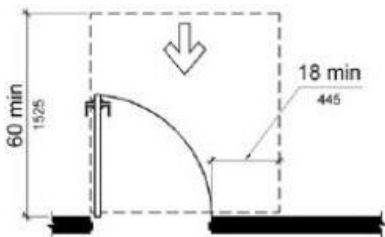
**Recommendation:** Swing door inward. Install door pull.

**Sheet**  
A1



**Cost Impact**  
450

### Photos



404.2.4.1(a)

Kim Goss

May 16, 2020 12:37 PM



Kim Goss

May 11, 2021 1:55 PM



Kim Goss

May 11, 2021 1:55 PM



Kim Goss

May 11, 2021 2:04 PM

## #31 Priority 3: Toilet Compartments

**Status**  
Open

**Location**  
Men's Restroom

**Description**  
The door to the wheelchair accessible stall has only 6" of clearance past the latch on the pull side. No door pull is installed on the inside of the stall door, and the door is not self-closing.

**Recommendation:** Swing door inward. Install door pull. Adjust hinges.

### Photos



Kim Goss  
May 11, 2021 2:08 PM

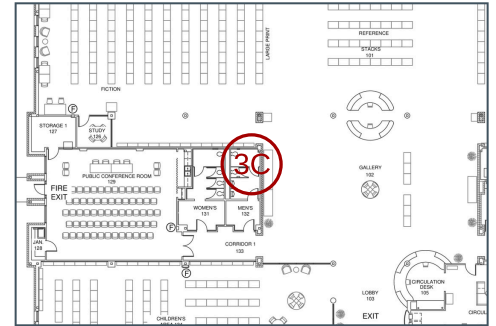


Kim Goss  
May 11, 2021 2:08 PM



Kim Goss  
May 11, 2021 2:08 PM

**Sheet**  
A1



**Cost Impact**  
450



**Kim Goss**

May 11, 2021 2:08 PM

---



## #30 Priority 3: Grab Bars

### Status

Open

### Location

Women's Restroom

### Description

The grab bars are installed with the top of the gripping surface 36-3/4" high, and the side grab bar has only 6" of clearance above the bar.

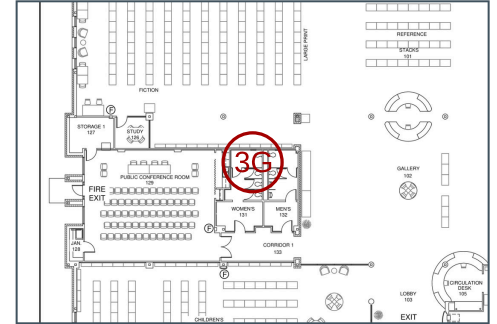
### Recommendation:

Reposition grab bar with the top of the gripping surface 33" to 36" high. Relocate toilet paper dispenser below grab bar.

(Note: If these elements were installed prior to March 15, 2012, this condition may enjoy safe harbor until replaced.)

### Sheet

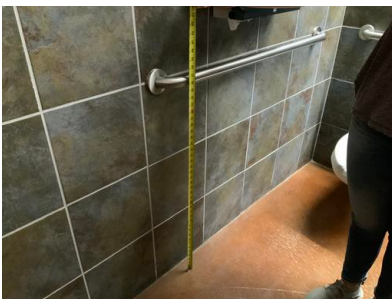
A1



### Cost Impact

600

### Photos



Kim Goss  
May 11, 2021 1:56 PM



Kim Goss  
May 11, 2021 1:56 PM



Kim Goss  
May 11, 2021 1:56 PM



Kim Goss  
May 11, 2021 1:56 PM



Kim Goss  
May 11, 2021 2:05 PM



Kim Goss  
May 11, 2021 2:05 PM

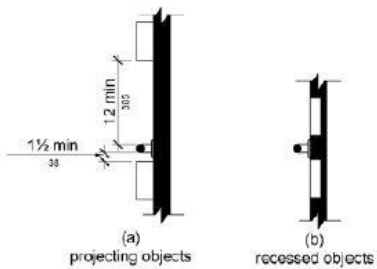


Figure 609.3 Spacing of Grab Bars

609.3  
Kim Goss  
Jun 25, 2021 2:49 PM

## #32 Priority 3: Grab Bars

### Status

Open

### Location

Men's Restroom

### Description

The grab bars are installed with the top of the gripping surface 36-1/2" high, and the side grab bar has only 6" of clearance above the bar.

### Recommendation:

Reposition grab bar with the top of the gripping surface 33" to 36" high. Relocate toilet paper dispenser below grab bar.

(Note: If these elements were installed prior to March 15, 2012, this condition may enjoy safe harbor until replaced.)

### Photos



Photo May 11, 2 02 38 PM

Kim Goss

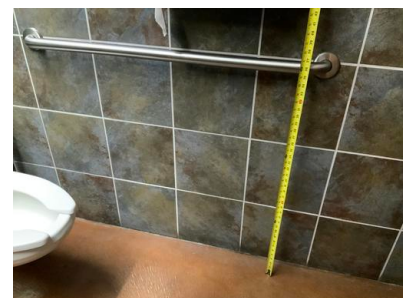
May 11, 2021 2:02 PM



Photo May 11, 2 02 43 PM

Kim Goss

May 11, 2021 2:02 PM

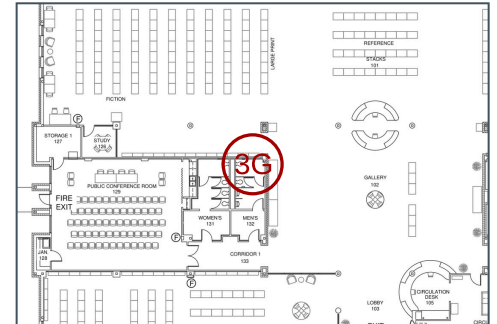


Kim Goss

May 11, 2021 2:09 PM

### Sheet

A1



### Cost Impact

600



Kim Goss  
May 11, 2021 2:09 PM



Kim Goss  
May 11, 2021 2:09 PM



Kim Goss  
May 11, 2021 2:09 PM

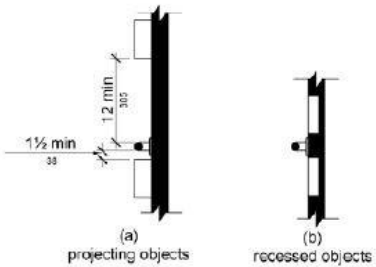


Figure 609.3 Spacing of Grab Bars

609.3  
Kim Goss  
Jun 29, 2021 3:41 PM



## #25 Priority 3: Mirrors

### Status

Open

### Location

Women's Restroom

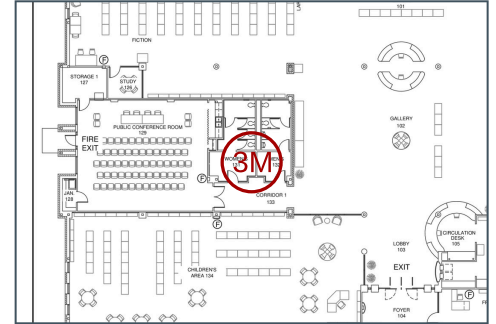
### Description

The mirror is mounted with the bottom of the reflective surface 48-1/2" high.

Recommendation: Install a mirror with the bottom of the reflective surface 40" high maximum.

### Sheet

A1



### Cost Impact

300

### Photos



Kim Goss  
May 11, 2021 1:49 PM



Kim Goss  
May 11, 2021 1:49 PM

## #33 Priority 3: Mirrors

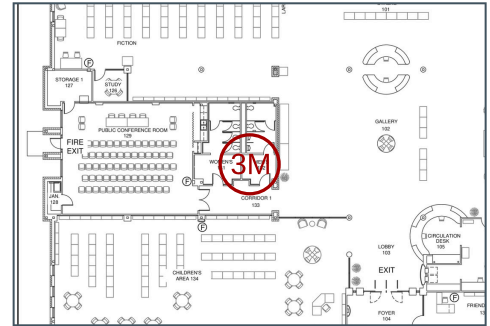
**Status**  
Open

**Location**  
Men's Restroom

**Description**  
The mirror is mounted with the bottom of the reflective surface 48-3/4" high.

Recommendation: Install a mirror with the bottom of the reflective surface 40" high maximum.

**Sheet**  
A1



**Cost Impact**  
300

## Photos



Kim Goss  
May 11, 2021 2:06 PM



Kim Goss  
May 11, 2021 2:06 PM

## #27 Priority 3: Protruding Objects

### Status

Open

### Location

Women's Restroom

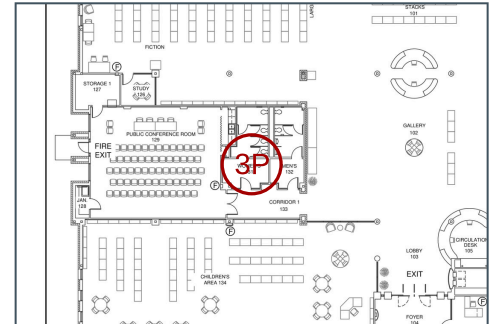
### Description

The hand dryer protrudes 6-1/2" at 39" high.

Recommendation: Relocate hand dryer.

### Sheet

A1



### Cost Impact

500

### Photos



Kim Goss  
May 11, 2021 1:52 PM



Kim Goss  
May 11, 2021 1:52 PM



Kim Goss  
May 11, 2021 1:52 PM

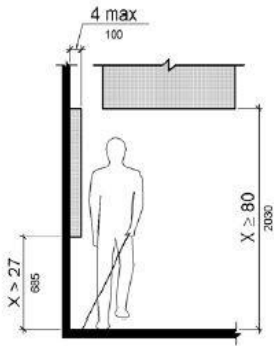


Figure 307.2 Limits of Protruding Objects

307.2

Kim Goss

Jun 25, 2021 2:44 PM



## #34 Priority 3: Protruding Objects

### Status

Open

### Location

Men's Restroom

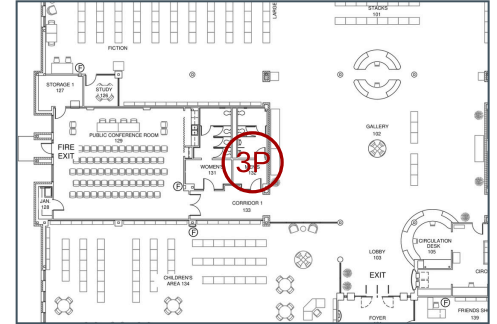
### Description

The hand dryer protrudes 6-1/2" at 39" high.

Recommendation: Relocate hand dryer.

### Sheet

A1



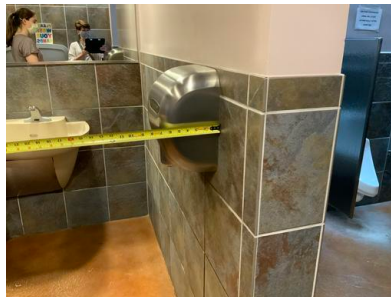
### Cost Impact

500

### Photos



Kim Goss  
May 11, 2021 2:06 PM



Kim Goss  
May 11, 2021 2:06 PM



Kim Goss  
May 11, 2021 2:06 PM

## #29 Priority 3: Water Closets

### Status

Open

### Location

Women's Restroom

### Description

The centerline of the water closet is 18-1/2" from the side wall.

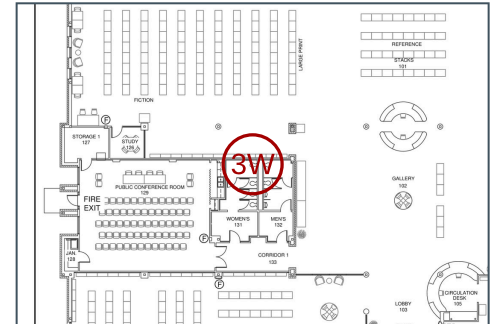
### Recommendation:

Reposition water closet with the centerline 16" to 18" from the wall.

(Note: If the water closet was installed prior to March 15, 2012, it may enjoy safe harbor until replaced.)

### Sheet

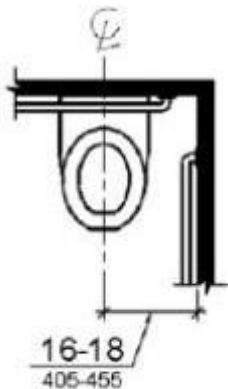
A1



### Cost Impact

2500

### Photos



(a)  
wheelchair  
accessible  
water closets

604.2 (a)

Kim Goss

May 16, 2020 1:40 PM



Kim Goss

May 11, 2021 1:55 PM



Kim Goss

May 11, 2021 1:55 PM

## #24 Priority 4: Drinking Fountains

### Status

Open

### Location

Restroom Foyer

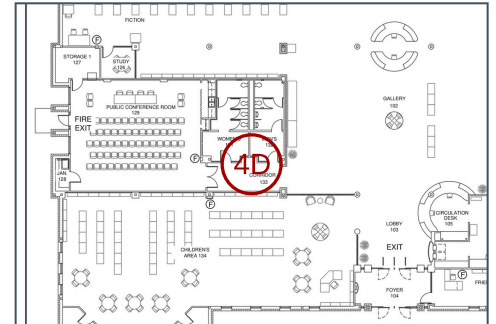
### Description

One accessible drinking fountain is provided, but no standing height fountain is provided.

Recommendation: Install a standing height fountain with the spout outlet 38" to 43" high.

### Sheet

A1



### Cost Impact

3750

### Photos



Kim Goss

May 11, 2021 1:47 PM

## #37 Priority 4: Vending Machines

**Status**  
Open

**Location**  
Vending

### Description

The vending machines have card swipes positioned 59" and 65" high.

Recommendation: Replace vending machines.

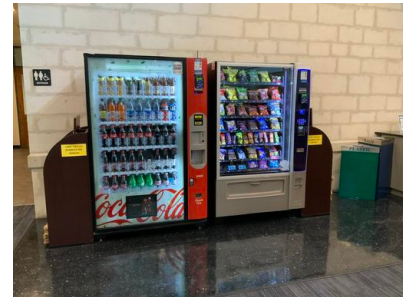
### Photos



Kim Goss  
May 11, 2021 2:18 PM

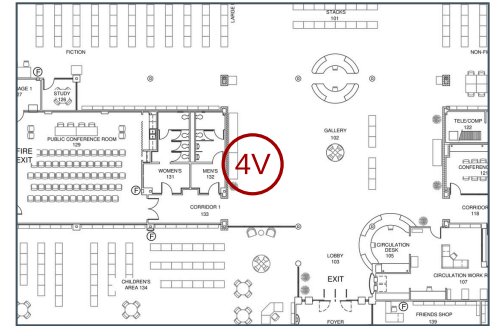


Kim Goss  
May 11, 2021 2:18 PM

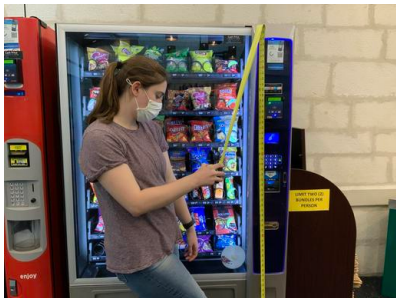


Kim Goss  
May 11, 2021 2:18 PM

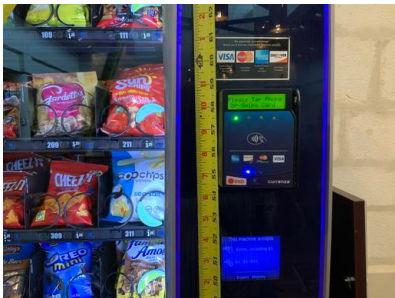
**Sheet**  
A1







Kim Goss  
May 11, 2021 2:18 PM



Kim Goss  
May 11, 2021 2:18 PM

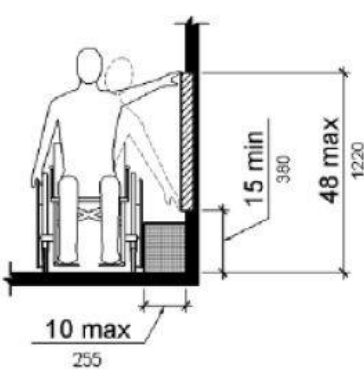


Figure 308.3.1 Unobstructed Side Reach

308.3.1  
Kim Goss  
Jun 25, 2021 2:25 PM